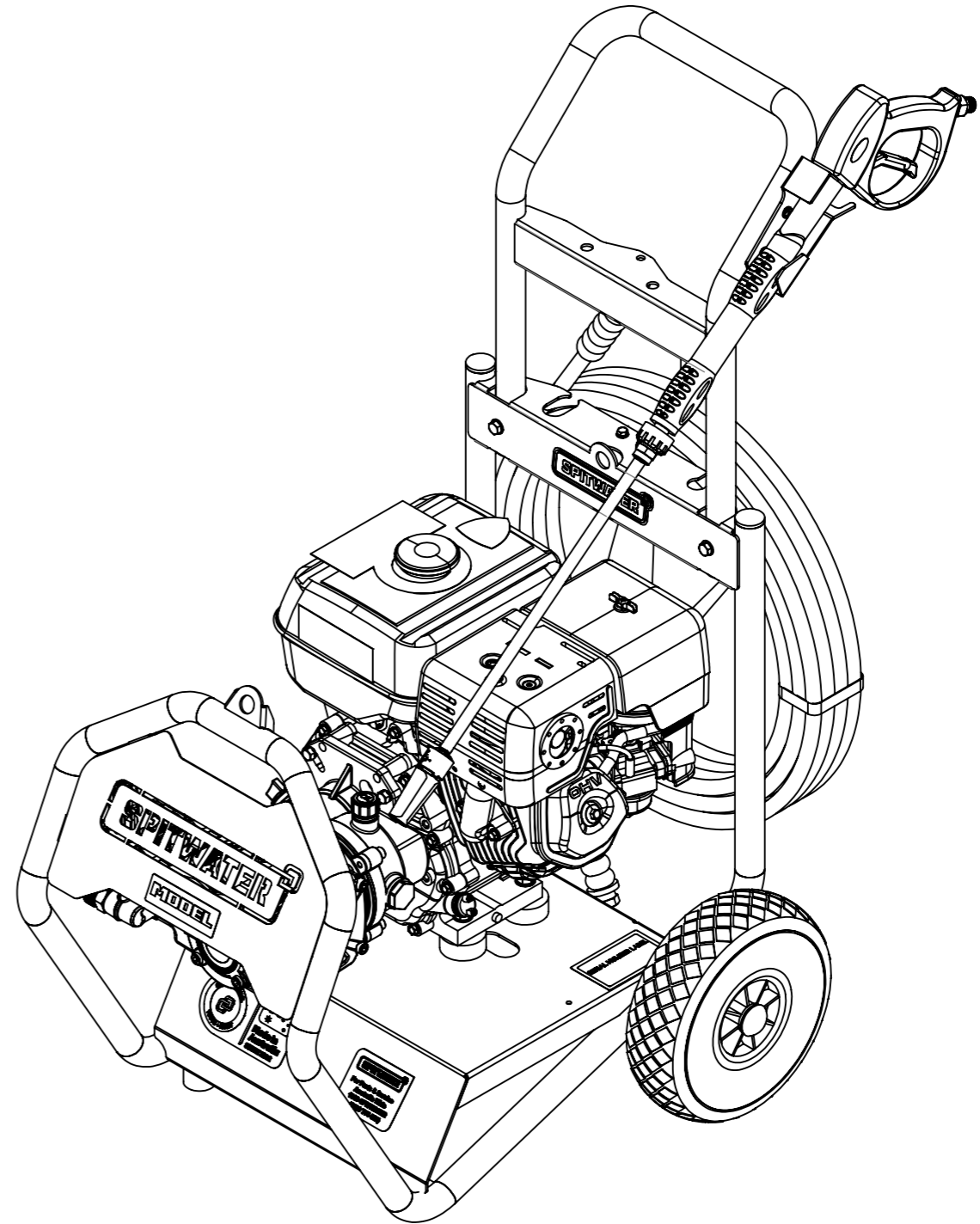


ITEM NO.	PART NUMBER	DESCRIPTION	QTY.
1	74002	FRAME COMPLETE	1
2	47045	300-4 PNEUMATIC WHEEL-BLACK PLASTIC HUB	2
3	70200-P	STANDARD FLAT WASHER 20.50 x 35 x 3	2
4	47044	HUB CAP mm.20	2
5	48894-G	ANTI VIBRATION STUD MOUNT 35x25mm RUBBER M8X1	2
6	48894-F	ANTI VIBRATION STUD MOUNT 50x20mm RUBBER M10X2	4
7	70200-I	FLAT WASHER 10.50 x 21x 1.50	8
8	70051-H	NYLOCK NUT M10 x 1.50 - 6	8
9	47153	PETROL ENGINE 9 HP HONDA - GX 270 UT2QXU	1
10	PA50000000	GEARBOX B18 11-18HP 1" SHAFT	1
11	I96751400	WASHER 21.5X27X1.5	1
12	49237	REDUCER 1/2M BSPP - 3/4M BSPP	1
13	70559-A	TAIL PIECE COMPLETE 3/4F BSPP - SNAP ON W/FILTER	1
14	72043	NIPPLE 1/8"M BSPT - 1/4"F BSPP	1
15	47105	GAUGE BACK/A 63mm 400bar 1/4"M BSPP 60°S	1
16	47400-A	THERMAL VALVE 10BAR 63° C 1/2"M BSPP	1
17	20240	SERIAL NUMBER LABEL	1
18	20232-A	100x60 Blank Crystal Clear 76/2500	1
19	IPP202	PUMP E3B1713 R W/VALVE L M22	1
20	70104-N	SCREW HEXAGONAL HEAD M6 x 1.00 x 25 -4.8	6
21	70210-D	INTERNAL TOOTH LOCK WASHER M 6	8
22	70200-E	FLAT WASHER 6.50 x 13 x 1.20	8
23	48446	PLASTIC PLUG 32mm	2
24	74300	FRONT COVER COMPLETE	1
25	48656	PALLET HP251/A-201SAE-HP201DEH	1
26	44539-G.1	DETERGENT HOSE	1
27	46241	2 STEP PLASTIC DET FILTER 1/4" HOSE BARB	1
28	46239	SPRING HOSE CLAMP 9.3/9.9	1
29	48655	PACKAGING HP251A HP201SAE HP2215DEL	1
30	20242	PACKAGING LABEL	2
31	70701-00135	BLOCK TIMBER 135MM	2
32	72030	PACKING BRACKETS	4
33	20205	NEW PARTS & SERVICE LABEL	1
34	20241	MODEL LABEL	1
35	20253	NEW SPITWATER LOGO SMALL	1
36	20200	OTTICO ORIGINAL/AUSTRALIAN MADE LABEL	1
37	20273	HONDA AUSTRALIA APPROVED - FUEL CAP STICKER	1
38	20201	CAUTION HOT LABEL 38x38 BLACK/YELLOW	1
39	20272	HONDA AUSTRALIA APPROVED - FUEL CAP STICKER	1
40	74261	HANDLE COMPLETE	1
41	PA26025050	AR1 B M22 3PCS SCREW-TYPE CPL.-3/8M BSP	1
42	70106-Z	SCREW HEX HEAD M8 x 1.25 x 55 - 4.6	2
43	74403	GUN HOLDER COMPLETE	1

ITEM NO.	PART NUMBER	DESCRIPTION	QTY.
44	44330	H/P HOSE 10M 3/8FBSPP-3/8F BSPP	1
45	SWA006	SINGLE LANCE IDROJET 040	1
46	74404	HOSE HOLDER COMPLETE	1
47	M4022105010	MV925+MV70+ARF 30l/min 280bar 160°C	1
48	70104-I	SCREW HEX HEAD M6 x 1.00 x 16 -4.8	2
49	20275	HPC WARNING LABEL BLACK ON YELLOW	1
50	70200-H	FLAT WASHER 8.50 x 17x 1.40	4
51	70051-F	NYLOCK NUT M8 x 1.25 - 6	2
52	20274	HONDA WARRANTY CARD	1



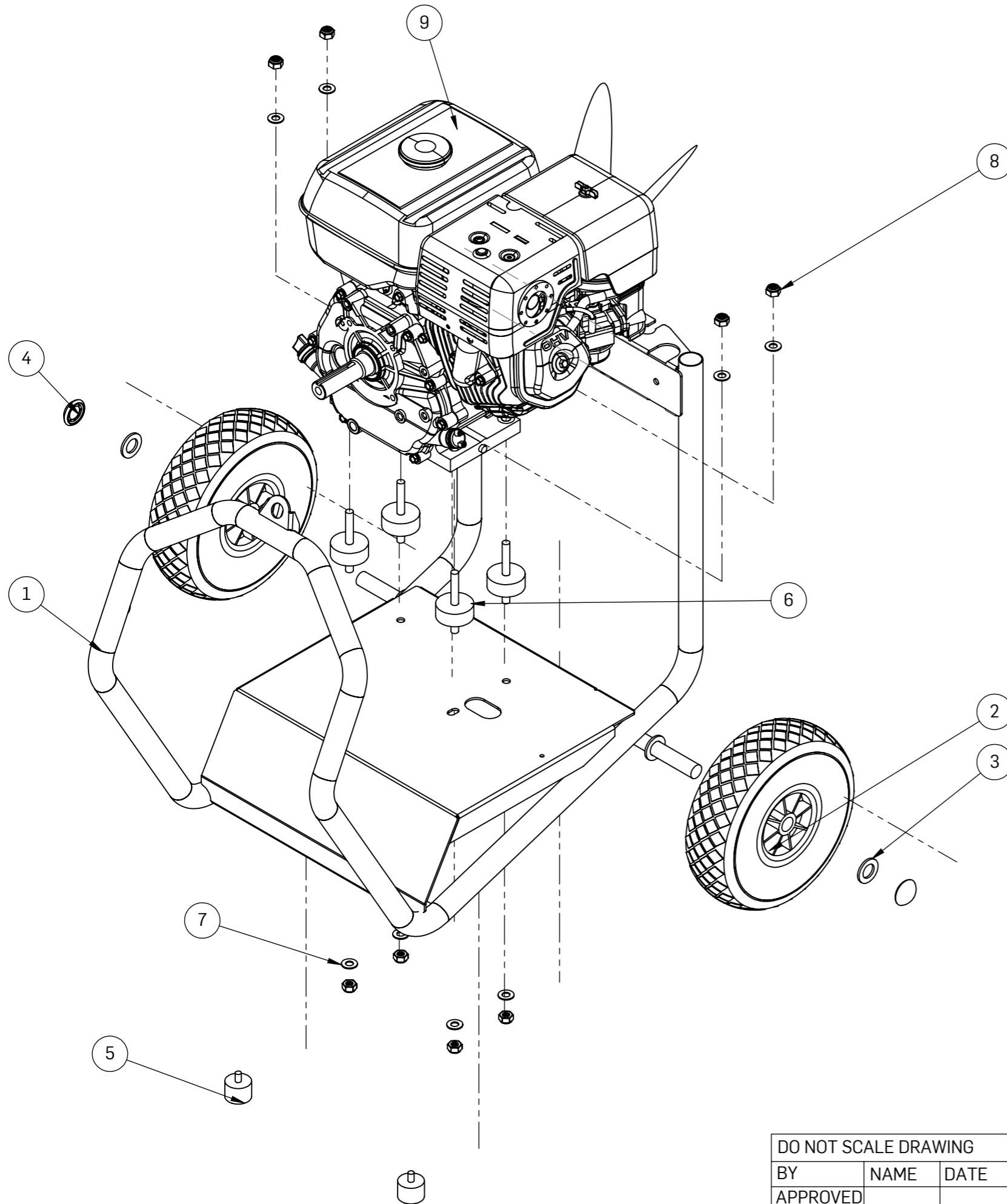
REV.	Serial No:	DESCRIPTION	DATE	APPROVED
A		Approved release	11/02/2022	

Revision Table

DO NOT SCALE DRAWING		
BY	NAME	DATE
APPROVED		
CHECKED		
DRAWN	Harry	1/06/2022

SPITWATER AUSTRALIA PTY LTD T/A/S OTTICO EQUIPMENT
 953 METRY STREET, ALBURY, NSW 2640, AUS
 02 60257255, enquiries@spitwater.com
 www.spitwater.com.au

DESCRIPTION: HE13200P 200bar 13l/m 6.0kW HONDA	PART NO: SCW010
MATERIAL:	Rev: B
FINISH:	QTY:
WEIGHT: G	SHEET 1 OF 4

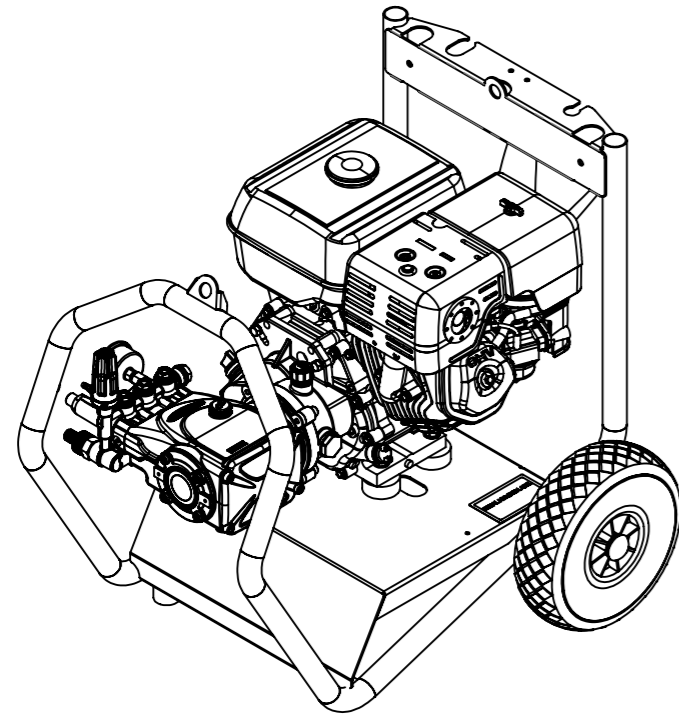


ITEM NO.	PART NUMBER	DESCRIPTION	QTY.
1	74002	FRAME COMPLETE	1
2	47045	300-4 PNEUMATIC WHEEL-BLACK PLASTIC HUB	2
3	70200-P	STANDARD FLAT WASHER 20.50 x 35 x 3	2
4	47044	HUB CAP mm.20	2
5	48894-G	ANTI VIBRATION STUD MOUNT 35x25mm RUBBER M8X1	2
6	48894-F	ANTI VIBRATION STUD MOUNT 50x20mm RUBBER M10X2	4
7	70200-I	FLAT WASHER 10.50 x 21x 1.50	8
8	70051-H	NYLOCK NUT M10 x 1.50 - 6	8
9	47153	PETROL ENGINE 9 HP HONDA - GX 270 UT2QXU	1

DO NOT SCALE DRAWING		
BY	NAME	DATE
APPROVED		
CHECKED		
DRAWN	Harry	1/06/2022

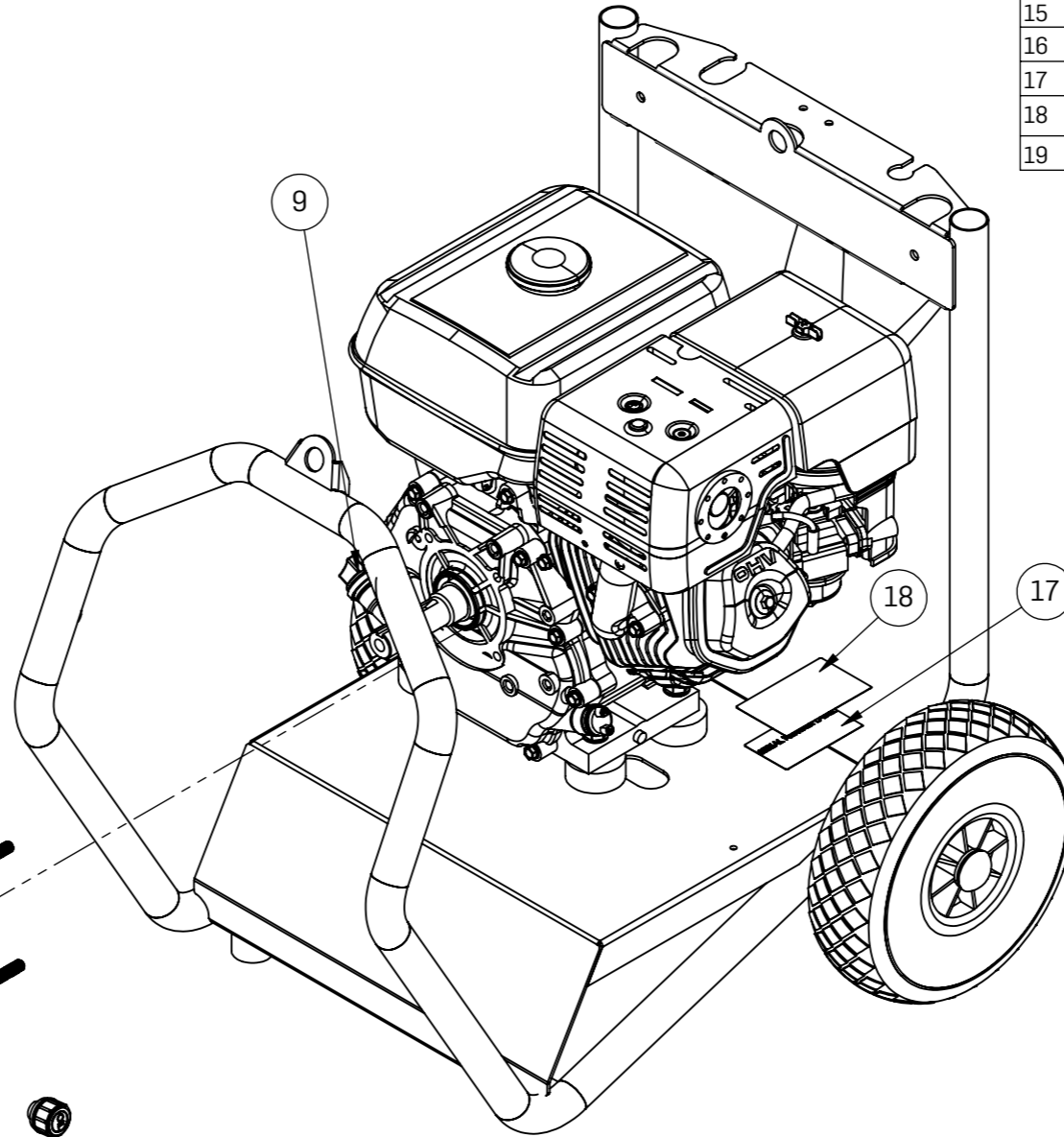
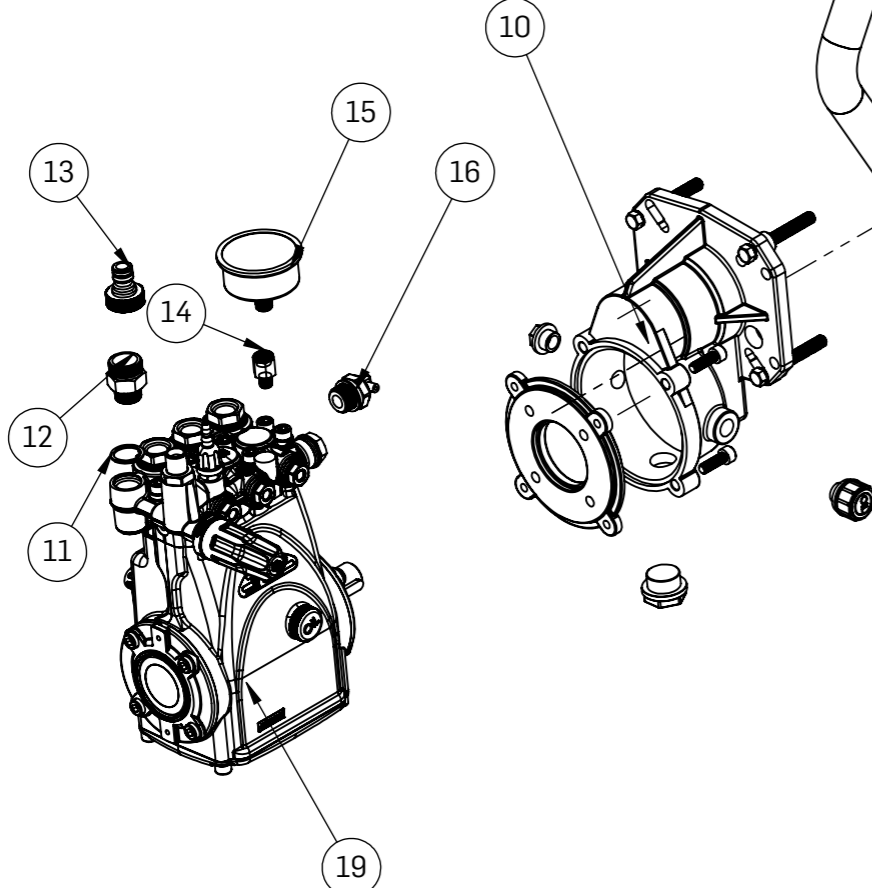
OTTICO EQUIPMENT
 SPITWATER AUSTRALIA PTY LTD T/AS OTTICO EQUIPMENT
 953 METRY STREET, ALBURY, NSW 2640, AUS
 02 60257255, enquiries@spitwater.com
 www.spitwater.com.au

DESCRIPTION: HE13200P 200bar 13l/m 6.0kW HONDA	PART NO: SCW010
MATERIAL:	Rev: B
FINISH:	QTY:
WEIGHT: G	SHEET 2 OF 4



ITEM NO.	PART NUMBER	DESCRIPTION	QTY.
1	74002	FRAME COMPLETE	1
2	47045	300-4 PNEUMATIC WHEEL-BLACK PLASTIC HUB	2
3	70200-P	STANDARD FLAT WASHER 20.50 x 35 x 3	2
4	47044	HUB CAP mm.20	2
5	48894-G	ANTI VIBRATION STUD MOUNT 35x25mm RUBBER M8X1	2
6	48894-F	ANTI VIBRATION STUD MOUNT 50x20mm RUBBER M10X2	4
7	70200-I	FLAT WASHER 10.50 x 21x 1.50	8
8	70051-H	NYLOCK NUT M10 x 1.50 - 6	8
9	47153	PETROL ENGINE 9 HP HONDA - GX 270 UT2QXU	1
10	PA50000000	GEARBOX B18 11-18HP 1" SHAFT	1
11	I96751400	WASHER 21.5X27X1.5	1
12	49237	REDUCER 1/2M BSPP - 3/4M BSPP	1
13	70559-A	TAIL PIECE COMPLETE 3/4F BSPP - SNAP ON W/FILTER	1
14	72043	NIPPLE 1/8"M BSPT - 1/4"F BSPP	1
15	47105	GAUGE BACK/A 63mm 400bar 1/4"M BSPP 60°S	1
16	47400-A	THERMAL VALVE 10BAR 63° C 1/2"M BSPP	1
17	20240	SERIAL NUMBER LABEL	1
18	20232-A	100x60 Blank Crystal Clear 76/2500	1
19	IPP202	PUMP E3B1713 R W/VALVE L M22	1

TILT GEARBOX/PUMP ASSEMBLY IN PSOTION GIVEN BELOW TO MOUNT ON ENGINE. THEN ROTATE ANTICLOCKWISE TO FIT IN HORIZONTAL POSITION

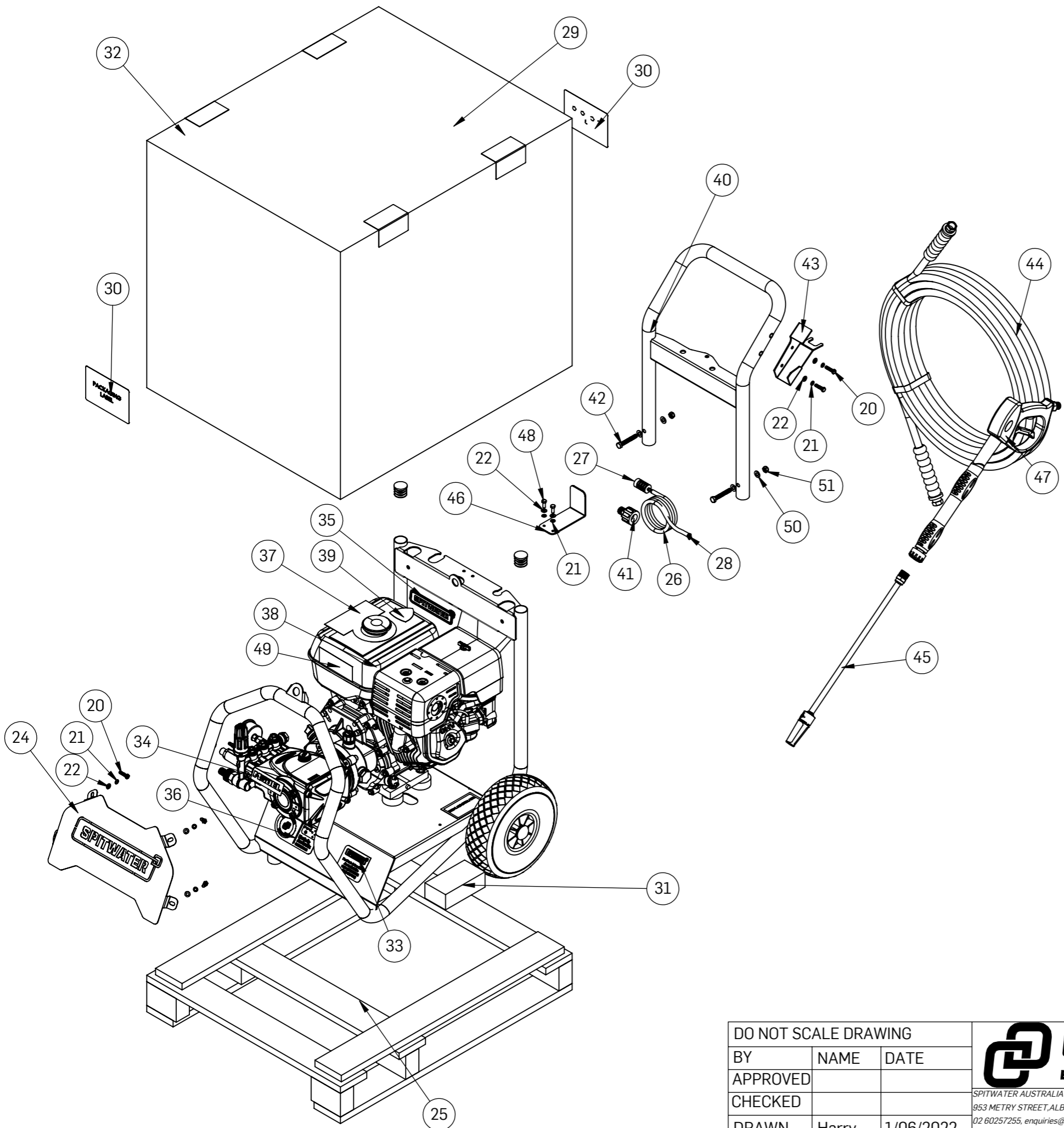


TYRES	
PRESSURE	20PSI
ENGINE	
OIL TYPE	10W-30
OIL QTY	1.1 L
GEARBOX	
GEAR OIL	80W-90

DO NOT SCALE DRAWING		
BY	NAME	DATE
APPROVED		
CHECKED		
DRAWN	Harry	1/06/2022

OTTICO EQUIPMENT
 SPITWATER AUSTRALIA PTY LTD T/AS OTTICO EQUIPMENT
 953 METRY STREET, ALBURY, NSW 2640, AUS
 02 60257255, enquiries@spitwater.com
 www.spitwater.com.au

DESCRIPTION: HE13200P 200bar 13l/m 6.0kW HONDA	PART NO: SCW010
MATERIAL:	Rev: B
FINISH:	QTY:
WEIGHT: G	SHEET 3 OF 4



ITEM NO.	PART NUMBER	DESCRIPTION	QTY.
1	74002	FRAME COMPLETE	1
2	47045	300-4 PNEUMATIC WHEEL-BLACK PLASTIC HUB	2
3	70200-P	STANDARD FLAT WASHER 20.50 x 35 x 3	2
4	47044	HUB CAP mm.20	2
5	48894-G	ANTI VIBRATION STUD MOUNT 35x25mm RUBBER M8X1	2
6	48894-F	ANTI VIBRATION STUD MOUNT 50x20mm RUBBER M10X2	4
7	70200-I	FLAT WASHER 10.50 x 21x 1.50	8
8	70051-H	NYLOCK NUT M10 x 1.50 - 6	8
9	47153	PETROL ENGINE 9 HP HONDA - GX 270 UT2QXU	1
10	PA50000000	GEARBOX B18 11-18HP 1" SHAFT	1
11	I96751400	WASHER 21.5X27X1.5	1
12	49237	REDUCER 1/2M BSPP - 3/4M BSPP	1
13	70559-A	TAIL PIECE COMPLETE 3/4F BSPP - SNAP ON W/FILTER	1
14	72043	NIPPLE 1/8"M BSPT - 1/4"F BSPP	1
15	47105	GAUGE BACK/A 63mm 400bar 1/4"M BSPP 60°S	1
16	47400-A	THERMAL VALVE 10BAR 63° C 1/2"M BSPP	1
17	20240	SERIAL NUMBER LABEL	1
18	20232-A	100x60 Blank Crystal Clear 76/2500	1
19	IPP202	PUMP E3B1713 R W/VALVE L M22	1
20	70104-N	SCREW HEXAGONAL HEAD M6 x 1.00 x 25 -4.8	6
21	70210-D	INTERNAL TOOTH LOCK WASHER M 6	8
22	70200-E	FLAT WASHER 6.50 x 13 x 1.20	8
23	48446	PLASTIC PLUG 32mm	2
24	74300	FRONT COVER COMPLETE	1
25	48656	PALLET HP251/A-201SAE-HP201DEH	1
26	44539-G.1	DETERGENT HOSE	1
27	46241	2 STEP PLASTIC DET FILTER 1/4" HOSE BARB	1
28	46239	SPRING HOSE CLAMP 9.3/9.9	1
29	48655	PACKAGING HP251A HP201SAE HP2215DEL	1
30	20242	PACKAGING LABEL	2
31	70701-00135	BLOCK TIMBER 135MM	2
32	72030	PACKING BRACKETS	4
33	20205	NEW PARTS & SERVICE LABEL	1
34	20241	MODEL LABEL	1
35	20253	NEW SPITWATER LOGO SMALL	1
36	20200	OTTICO ORIGINAL/AUSTRALIAN MADE LABEL	1
37	20273	HONDA AUSTRALIA APPROVED - FUEL CAP STICKER	1
38	20201	CAUTION HOT LABEL 38x38 BLACK/YELLOW	1
39	20272	HONDA AUSTRALIA APPROVED - FUEL CAP STICKER	1
40	74261	HANDLE COMPLETE	1
41	PA26025050	AR1 B M22 3PCS SCREW-TYPE CPL.-3/8M BSP	1
42	70106-Z	SCREW HEX HEAD M8 x 1.25 x 55 - 4.6	2
43	74403	GUN HOLDER COMPLETE	1
44	44330	H/P HOSE 10M 3/8FBSPP-3/8F BSPP	1
45	SWA006	SINGLE LANCE IDROJET 040	1
46	74404	HOSE HOLDER COMPLETE	1
47	M4022105010	MV925+MV70+ARF 30l/min 280bar 160°C	1
48	70104-I	SCREW HEX HEAD M6 x 1.00 x 16 -4.8	2
49	20275	HPC WARNING LABEL BLACK ON YELLOW	1
50	70200-H	FLAT WASHER 8.50 x 17x 1.40	4
51	70051-F	NYLOCK NUT M8 x 1.25 - 6	2
52	20274	HONDA WARRANTY CARD	1

DO NOT SCALE DRAWING		
BY	NAME	DATE
APPROVED		
CHECKED		
DRAWN	Harry	1/06/2022

OTTICO EQUIPMENT
 SPITWATER AUSTRALIA PTY LTD T/AS OTTICO EQUIPMENT
 953 METRY STREET, ALBURY, NSW 2640, AUS
 02 60257255, enquiries@spitwater.com
 www.spitwater.com.au

DESCRIPTION: HE13200P 200bar 13l/m 6.0kW HONDA	PART NO: SCW010
MATERIAL:	Rev: B
FINISH:	QTY:
WEIGHT: G	SHEET 4 OF 4